

## Contact information

- 電話 Enquiries 2894 8896 傳真 Fax 2894 8038
- 電郵 Email victimsupport@poleungkuk.org.hk
- 地址 Address 將軍澳翠林邨彩林樓地下102-107號  
Flat 102-107, G/F Choi Lam House, Tsui Lam Estate, Tseung Kwan O



## 中心開放時間

Opening Hours

- 星期一至五 Monday to Friday  
上午9時至下午6時 9am to 6pm
- 星期六 Saturday  
上午9時至下午1時 9am to 1pm  
(公眾假期除外 Except Public Holidays)

## 支援服務時間

Direct Support Service  
(必須預約 By appointment)

- 星期一至日 (包括公眾假期)  
Monday to Sunday (Include public holidays)  
上午9時至晚上9時  
9am to 9pm



## 網址 Website

<http://victimsupport.poleungkuk.org.hk/>

4000 7/2021



## 誰可成為義工

Who can be a volunteer

- 年滿18歲及心智成熟  
Aged 18 or above with mature personality
- 具積極的人生觀及非批判性的態度  
Positive and non-judgmental in attitude
- 願意貢獻個人時間  
Willing to devote personal time
- 願意積極聆聽受助人的需要  
Willing to listen to the needs of the service users wholeheartedly
- 完成義工核心培訓課程及通過甄選  
Able to complete the Core Volunteer Training and meet the screening criteria

義工申請表可於中心網頁下載，填妥後以電郵或傳真提交。  
Volunteer application form can be downloaded from our website.  
Please complete the form and return it to us by email or fax.

## 義工核心培訓課程 (15小時) 內容：

Core Volunteer Training (15 hours) modules include:

- 香港家庭暴力現況  
Family violence in Hong Kong
- 同理心及溝通技巧  
Use of empathy and communication skills
- 社區支援服務資訊  
Information on community support services
- 家暴受害人的心理需要  
Psychological needs of victims of family violence
- 刑事及民事法律保障  
Protection of victims under criminal and civil law

## 義工服務

Volunteer Service



## 申請方法 How to apply

由以下機構社工轉介

Referrals from social workers of any following units:

- 社會福利署及非政府機構綜合家庭服務中心/ 綜合服務中心  
Integrated Family Service Centres / Integrated Services Centres of Social Welfare Department and NGOs
- 社會福利署感化及社會服務令辦事處  
Probation and Community Service Orders Offices of the Social Welfare Department
- 婦女庇護中心/ 危機介入及支援中心 (芷若園)  
Refuge Centres for Women / Multi-purpose Crisis Intervention and Support Centre (CEASE Crisis Centre)
- 家庭危機支援中心 (向晴軒)  
Family Crisis Support Centre
- 少數族裔人士支援服務中心  
Support Service Centres for Ethnic Minorities
- 社會福利署保護家庭及兒童服務課  
Family and Child Protective Services Units of the Social Welfare Department
- 社會福利署及醫院管理局轄下醫務社會服務部  
Medical Social Services Units of the Social Welfare Department and Hospital Authority

## 自行申請

Direct Application

- 只適用於小組活動 / 訓練及法律支援服務  
Only applicable to group activities / training and legal support services

## 服務期限及退出方法

Service period and service withdrawal

一般為6個月，透過評估及商議，中心及申請人均可提出終止服務的要求。  
Typically 6 months. Subject to assessment and discussion, both the Centre and the applicant may initiate termination of service.

## 服務申請方法

Service Application



保良局翠林中心  
Po Leung Kuk Tsui Lam Centre

Accompany

陪伴



## 家庭暴力受害人支援計劃

Victim Support Programme  
for Victims of Family Violence



保良局翠林中心  
Po Leung Kuk Tsui Lam Centre

## 家庭暴力受害人 支援計劃

Victim Support Programme  
for Victims of Family Violence

為家庭暴力受害人提供司法  
程序和社會支援服務的資訊、  
情緒支援及陪伴服務，幫助他們  
克服恐懼及重建正常生活。



We provide information related to  
judicial proceedings and social support  
services, as well as emotional support  
and accompany services, for  
victims of family violence,  
helping them to overcome fear  
and resume normal life.

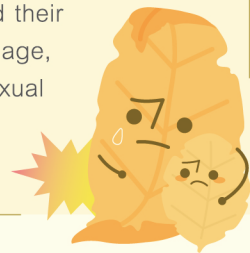


## 服務對象

Service Targets

虐待配偶/同居情侶及虐待兒童個案  
的受害人及其家庭成員  
(不分年齡、性別、種族、宗教及性傾向)

Victims of spouse / cohabitant  
battering and child abuse and their  
family members regardless of age,  
gender, race, religion and sexual  
orientation



## 服務地區

Service Areas

全港 Territory-wide



## 費用

Fees

服務費用全免  
(除部份指定活動)

Free of charge  
(except some activities  
as specified)

## 服務對象

Service Targets



由義務律師組成「法律診所」團  
隊，為服務使用者提供初步法律意見  
Provide access to a “Legal Clinic”  
formed by a group of pro bono  
lawyers, which provides preliminary  
legal advice to the service users

提供法律支援，包括：陪同服  
務使用者前往警署落口供、填  
寫表格、面見律師及出席聆訊  
Provide legal support by  
accompanying service users to  
take statements at police station,  
fill in forms, meet with solicitors  
and attend Court hearings etc.

透過證人支援計劃，陪伴兒童證  
人出庭作供(只接受警方轉介)  
Accompany child witnesses to  
testify in court through “Witness  
Support Programme for Child  
Witnesses” (Police referral only)

協助服務使用者認識及使用社  
區資源，包括：房屋、教育、  
經濟援助、醫療及托兒服務

Help service users to locate  
and make use of community  
resources including housing,  
education, financial support,  
medical and child care  
services



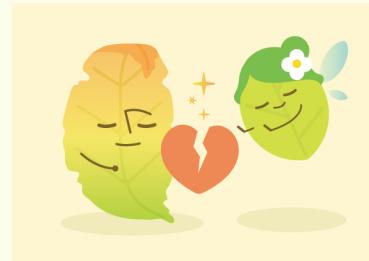
臨床心理評估  
Conduct Psychological Assessment

定期舉辦受害人心理教育小組  
及互助小組  
To organise regular psycho-educational  
groups and mutual support groups

協助受家庭暴力影響的兒童與非同住的  
父/母進行聯繫  
(詳情可參閱保良局子女探視服務單張)  
Help children who have been exposed to  
family violence to maintain contact with  
their non-residential parent (Details refer  
to the leaflet of Po Leung Kuk Child  
Visitation Service)

定期舉辦生活技能訓練，例如：個人  
護理、家務管理、親職教育  
Provide life skills training including  
personal care, household management,  
parental education etc.

家訪及家居安全評估  
Provide home visit and home safety  
assessment



舉辦義務工作持續  
培訓課程  
Provide continuous  
training programmes for  
volunteers

社區教育活動  
Conduct community  
education activities



## 服務內容

Services